

Description

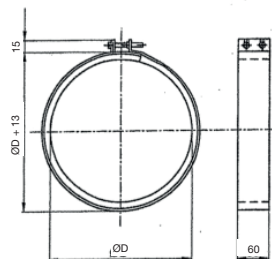
Connecting collars which facilitate the installation and removal of in-lines fans for service and cleaning. Made from galvanized sheet steel and fitted with foam which eliminates vibrations and ensures a tight fit.

The connecting collars are clamped together by two screws which allow for small differences in dimension.



Technical specifications

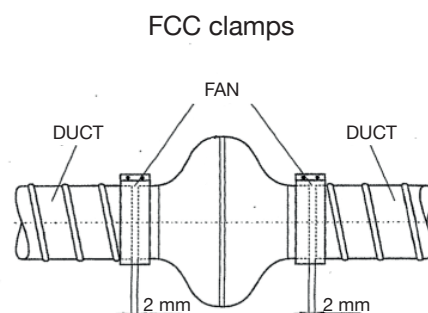
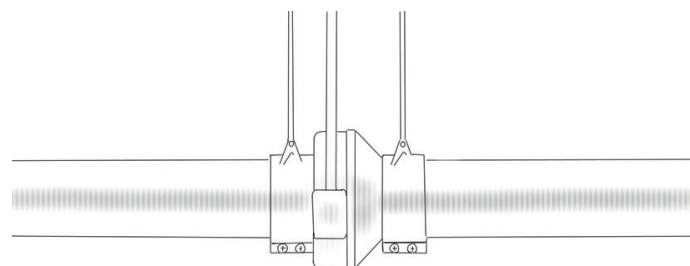
Material	Galvanized steel. Self adhesive grey foam.
Width	60 mm steel
Screws	2 M6 x 50
Diameters ØD (mm)	100 - 125 - 150 - 160 - 200 - 250 - 315 - 355 - 400 - 450 - 500



Application

Be sure to smoothen the clamp around the duct and the flange of the fan carefully for a perfect airtight connection.

Allow a gap of 2mm between the fan and the duct to avoid the vibrations to be spread in the network.



Information contained herein is based on careful tests and experience. It reflects our knowledge and is for guidance purpose only. It is given in good faith and user should ensure that the product is fit for purpose before any application. The quoted values are average and should not be taken as maximum or minimum values for specific purposes. Manufacturer and distributor are not responsible for any non-recommended use or consequential damage.